



About Chengcing Lake

Located in Niasong District, Kaohsiung City, Chengcing Lake covers a vast area and was originally constructed as an irrigation reservoir for the Caogong Canal. It is now the largest lake in Kaohsiung and one of the most important water sources in southern Taiwan.

Covering approximately **103 hectares**, the lake is renowned for its clear water and scenic beauty, earning it the nickname "**The West Lake of Taiwan.**"

The park seamlessly integrates natural ecology with cultural landscapes. A 7-kilometer lakeside trail winds along the shoreline, where pavilions and towers are scattered throughout, creating a tranquil and understated atmosphere. Chengcing Lake is an ideal destination for nature walks, birdwatching and relaxation.



Visitor Information

The opening hours for the park's Main Tourist Entrance, Rear Entrance, and Yuanshan Wooden Boardwalk are listed below and may be adjusted as necessary based on actual conditions.

Park Opening Hours

April - September

6:00 AM to 6:00 PM
After 5:30 PM, exit only
(no entry permitted).

October - March

6:00 AM-5:30 PM
After 5:00 PM, exit only
(no entry permitted).



Morning Exercise Hours:
4:00-6:00 AM
(No vehicles allowed)



Tourist Attractions

The scenic highlights of Chengcing Lake are organized under the theme of "Three Bridges, Six Scenic Spots, and Eight Views," each reflecting the area's rich cultural heritage and poetic landscape.

Three Bridges

Nine-curved Bridge, Magpie Bridge, and Suspension Bridge. Each bridge offers a distinctive waterside perspective and atmosphere.

Six Scenic Spots

Ziyou Pavilion, Summer Terrace, Fengyuan Pavilion, Baihua Hill (Lemon-scented gum Area), Fuguo Island, and Chengsu Forest. Explore a harmonious blend of cultural architecture and tranquil, tree-lined retreats.



Park Closure Information

The park may be closed under the following circumstances

- **Regular Closures:** Closed on Mondays and Lunar New Year's Eve. If either falls on a public holiday, the closure will be postponed to the next working day.
- **Emergency Closures:** Closed when the city government announces a suspension of work due to natural disasters.
- **Maintenance Closures:** Closed during officially announced maintenance periods.
- **Health Precautions:** To prevent the spread of infectious diseases (such as dengue fever or pneumonia), the park may be closed if there is evidence of infected individuals within the area and a risk of transmission. In such cases, entry may be prohibited, or access to specific areas, and usage regulations may be restricted as officially announced.

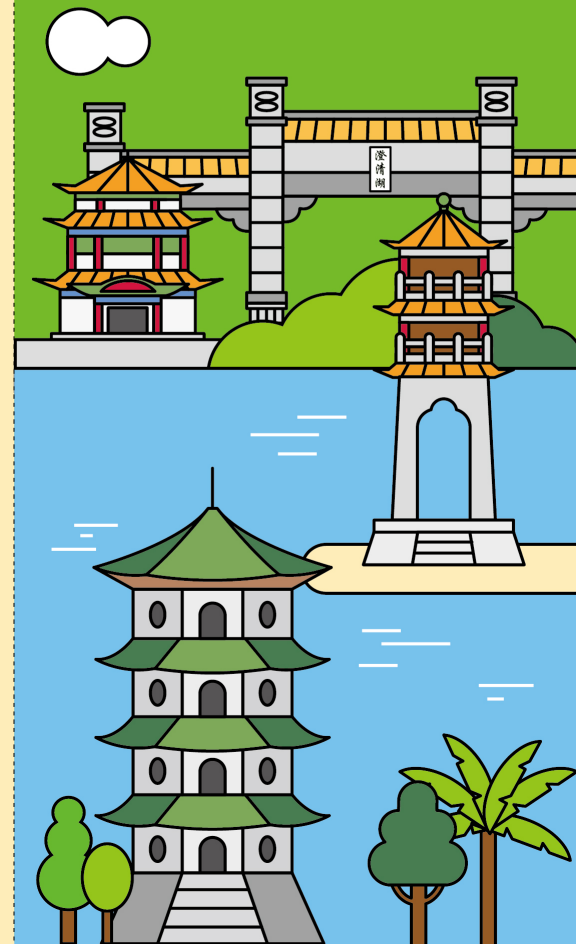
Eight Views

1. Plum Blossoms at Spring Dawn (Main Entrance)
2. Moon over the Winding Bridge (Nine-curved Bridge)
3. Willows by the Shore with Lotus in Bloom (West Coast Road)
4. Hilltop Overlooking the Sea (Zhongxing Pagoda)
5. Birdsong in the Deep Woods (Chengsu Forest)
6. Harmony of Lake and Hills (Martyrs' Shrine)
7. Scenic Views from the Three Pavilions (Youru Pavilion, Danru Pavilion, Qingru Pavilion)
8. Golden Glow over Pengdao Island (Deyue Tower)




Guide Map of Chengcing Lake

 Parks Office, Public Works Bureau,
Kaohsiung City Government



Guide Map of Chengcing Lake



 This park is an air-quality control area. Smoking is prohibited throughout the park.

- | | | |
|--|---|---|
|  Lake Scenic Loop Road |  Parking Lot |  Toilet |
|  AED (Automated External Defibrillator) |  Lifebuoy |  Accessible Toilet |
|  Visitor Service Center |  First Aid Kit |  Nursing Room |