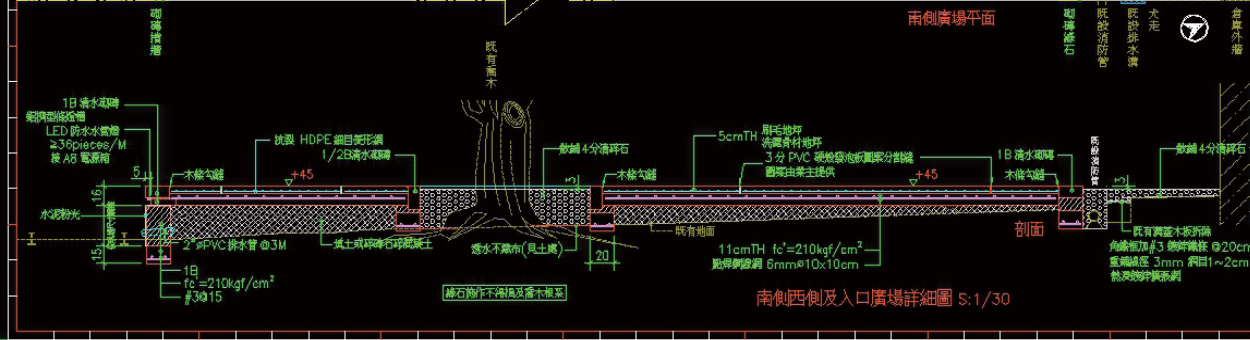
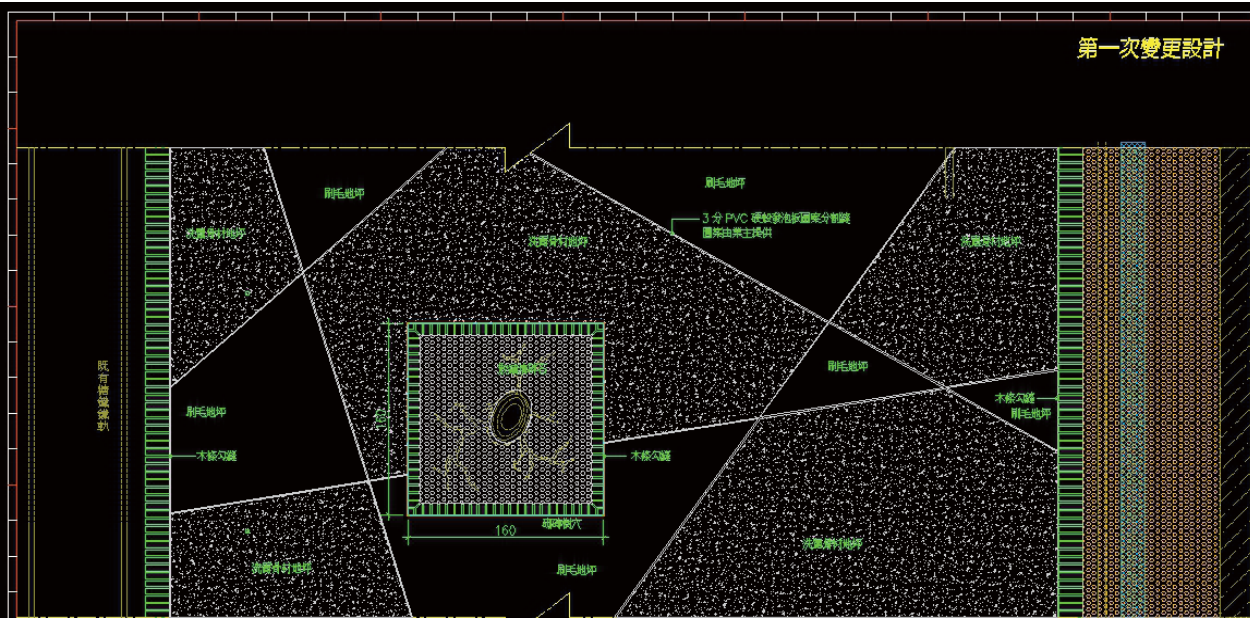


圖號	圖頁序
9	11
圖別	工程名稱
	輔龍文化園區南側鋪面改善工程

南側西側及入口廣場詳細圖

卓建光
建築師事務所
台南市崇德20街62號
TEL: (06)2893832
FAX: (06)2603396

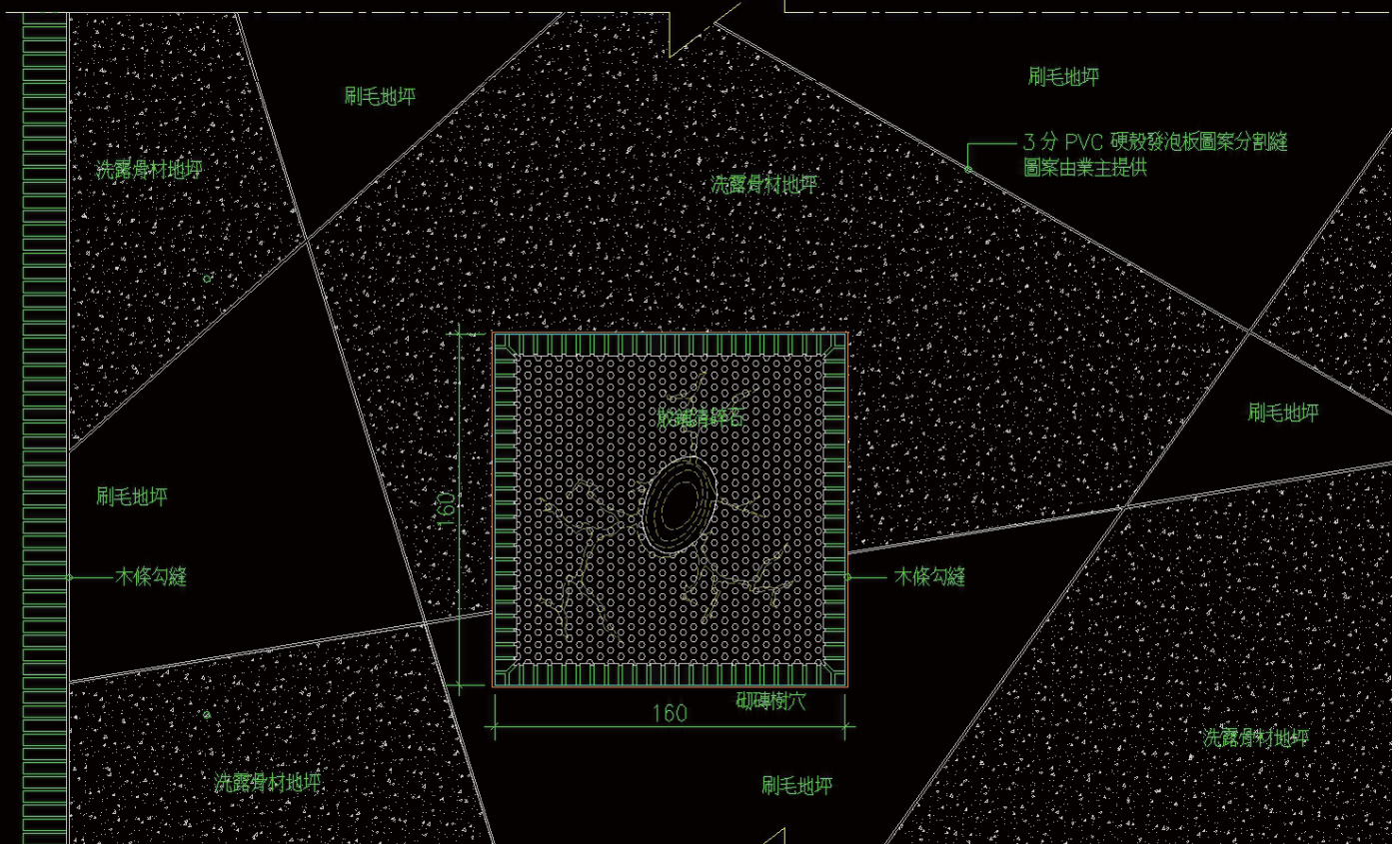


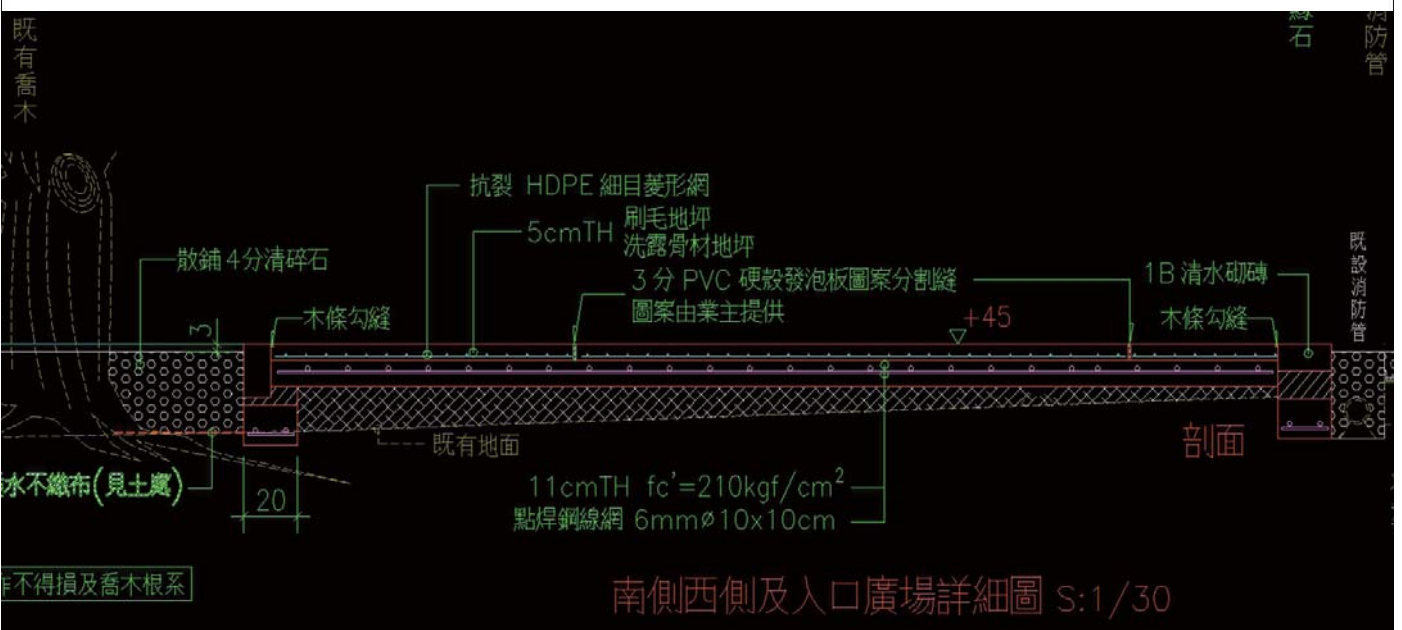
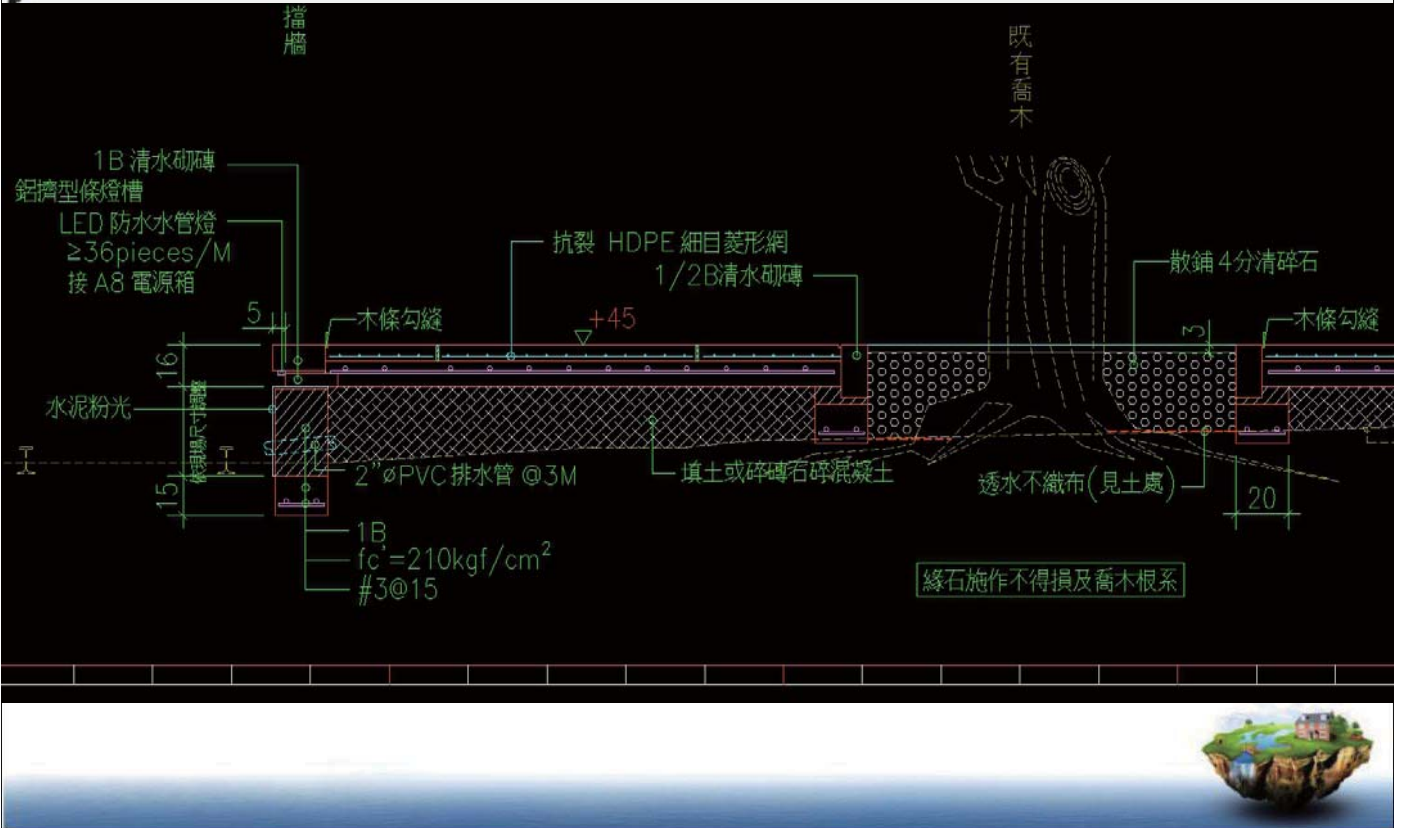
次數	日期
△	
△	
△	

圖例

- 柱心線
- 樁心線
- 皮線
- RC WALL
- 1/2B 磚溝

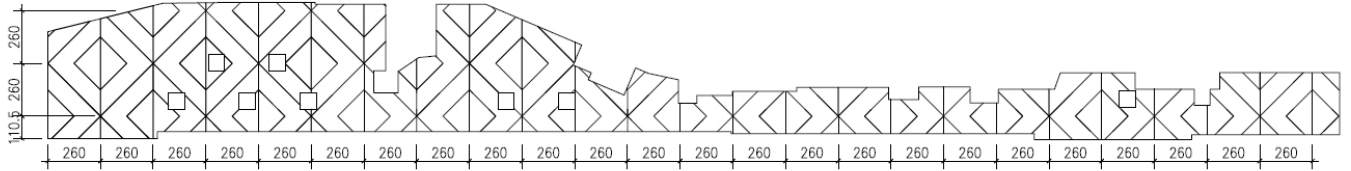
南側西側及入口廣場詳細圖 S:1/30





南側西側及入口廣場詳細圖 S:1/30















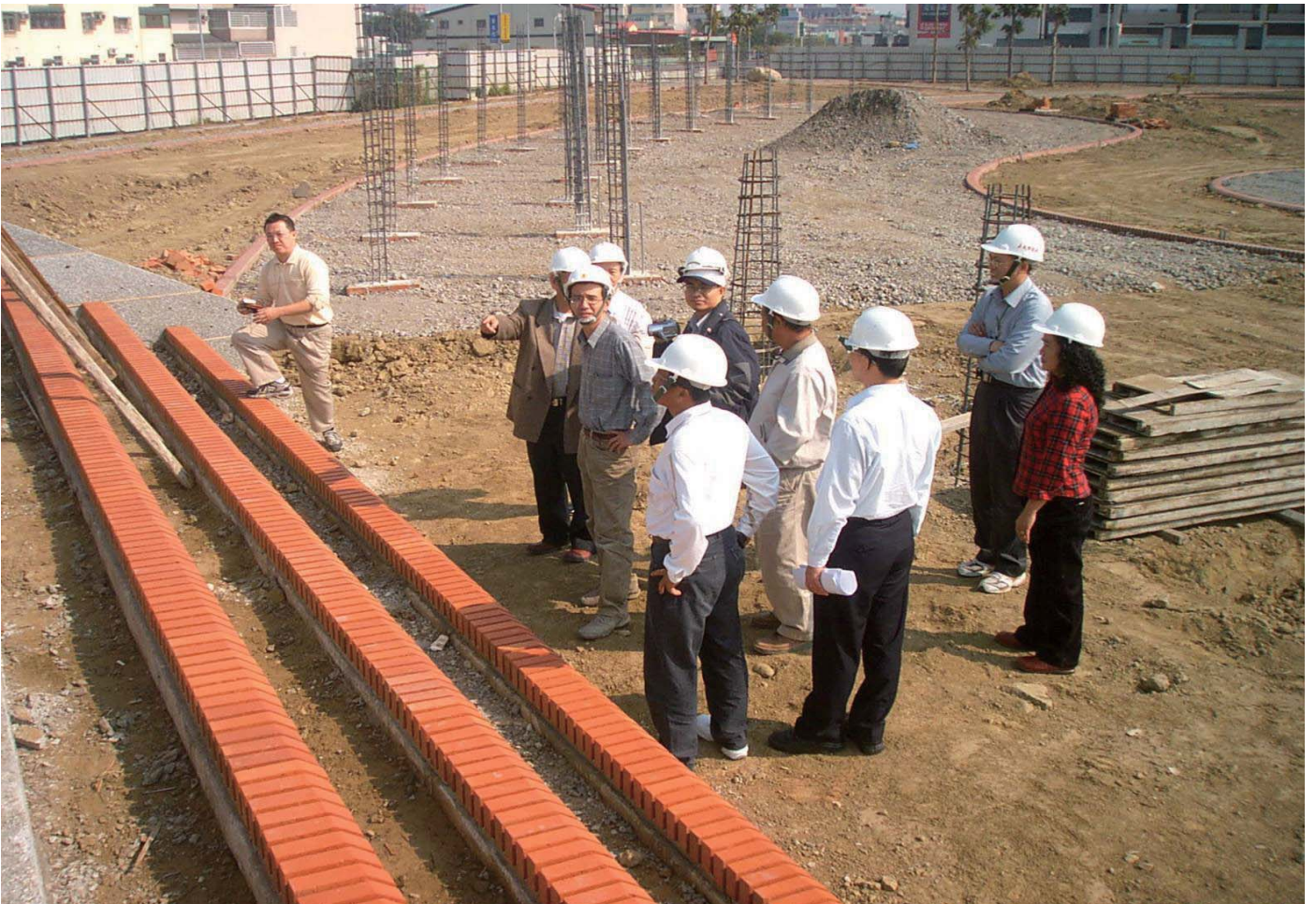
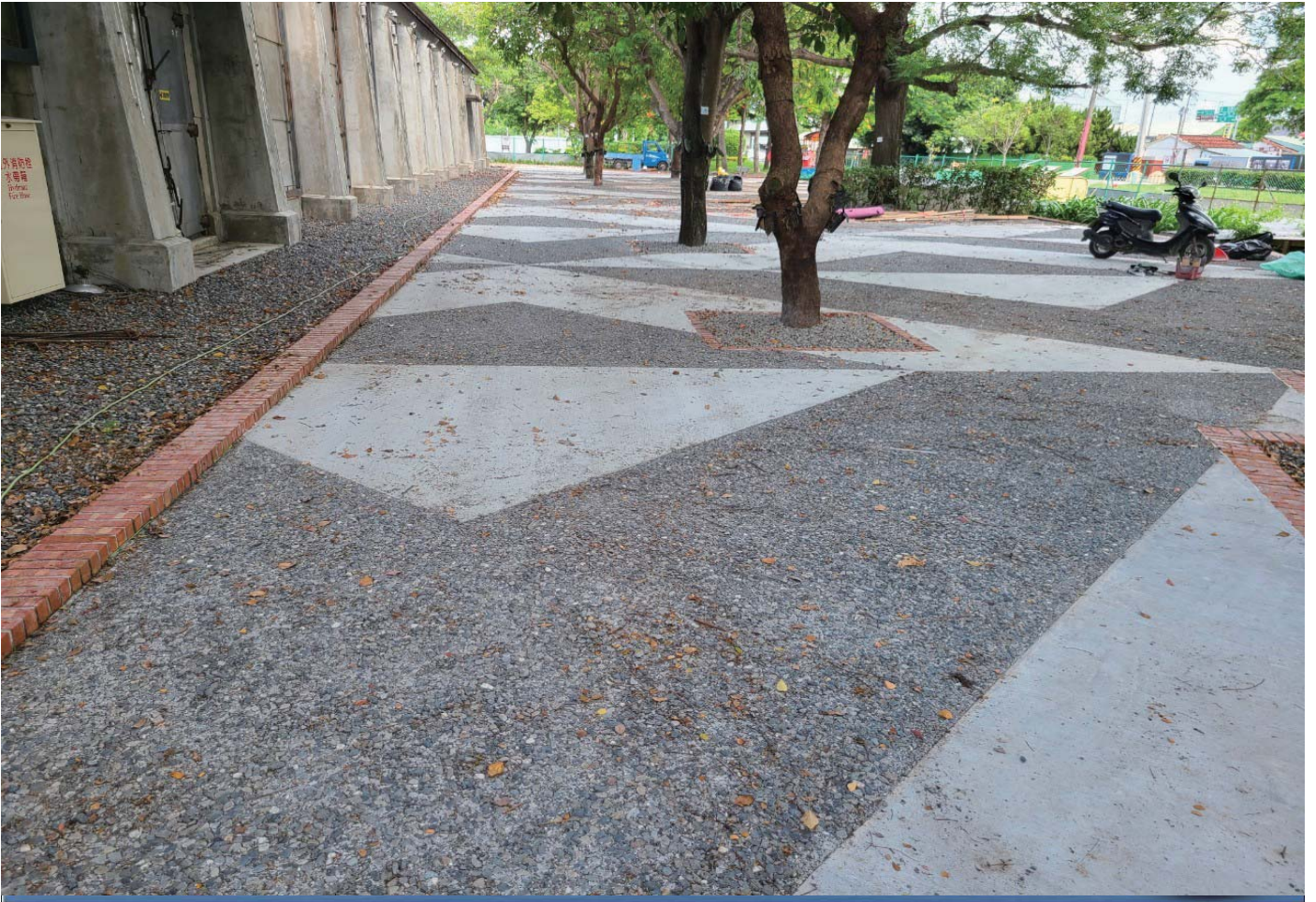














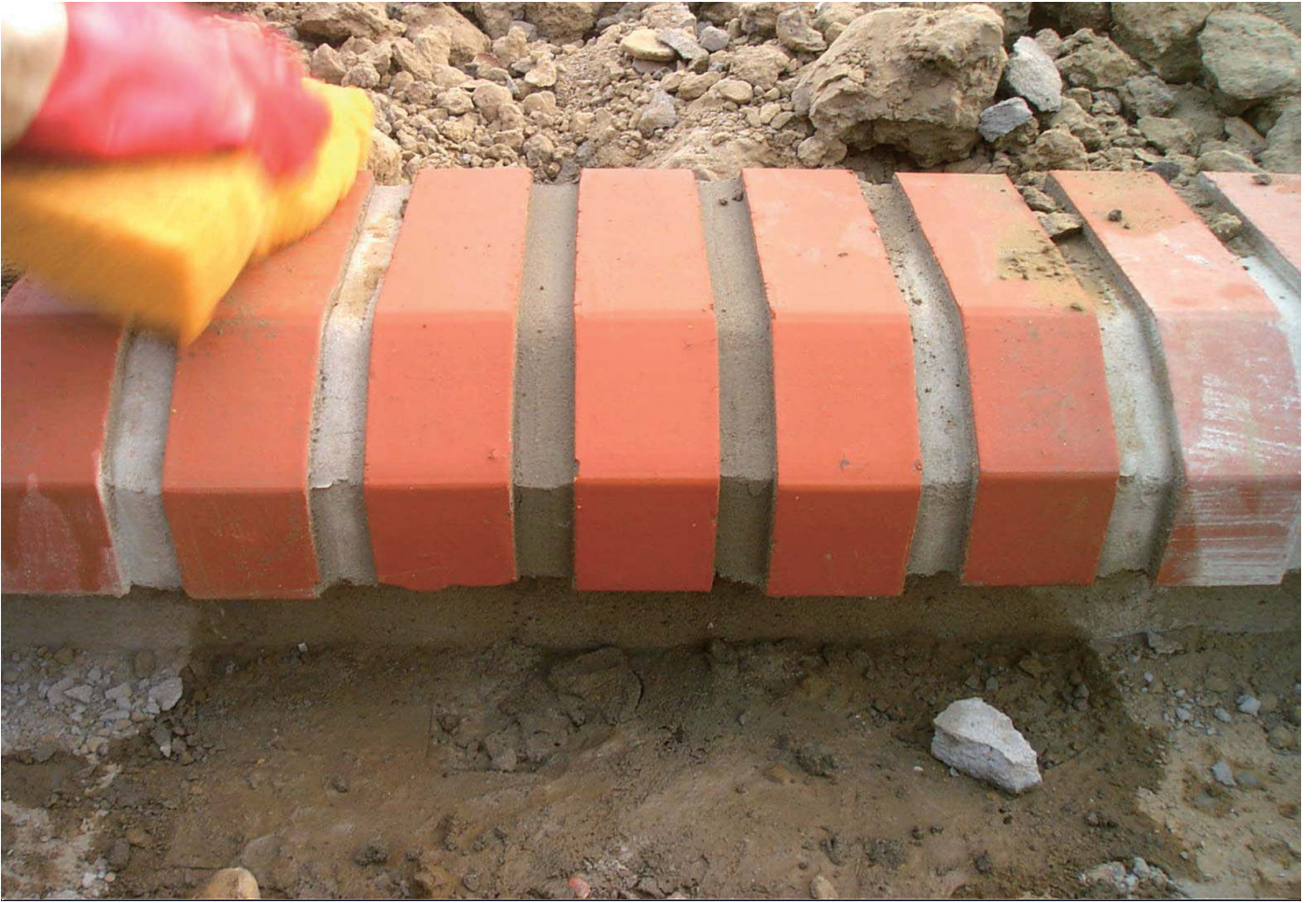


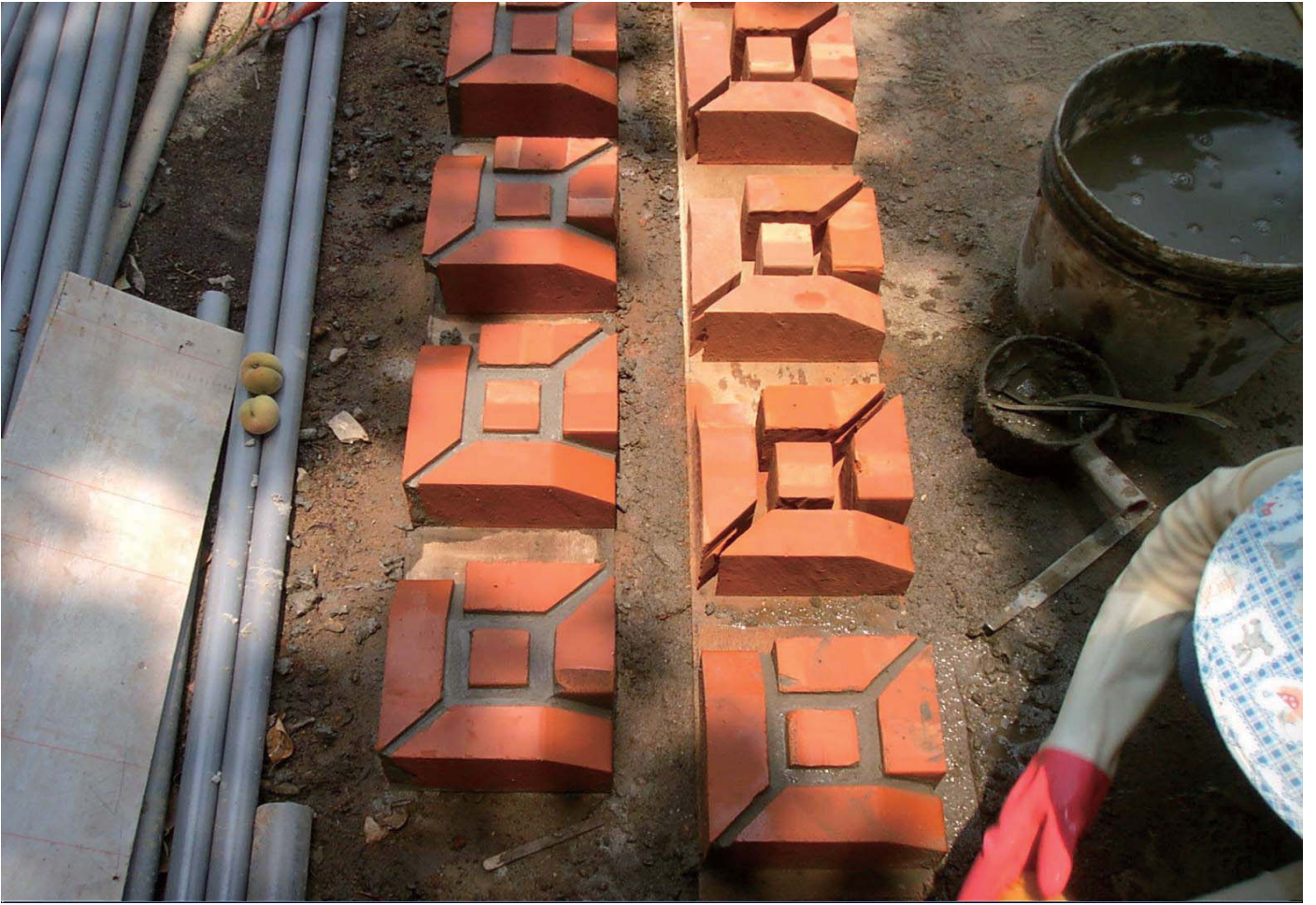


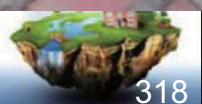
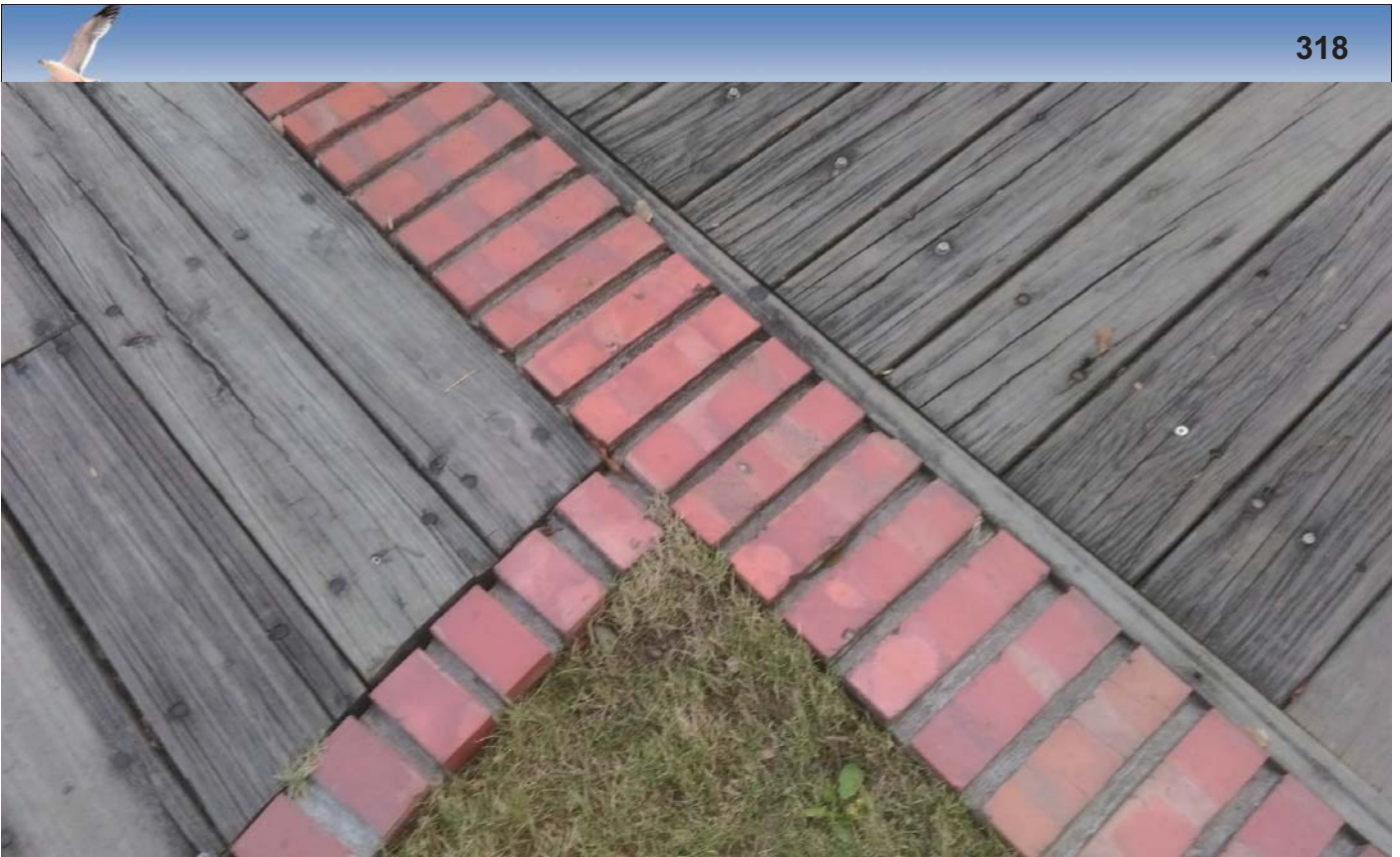
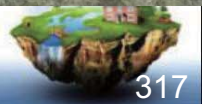
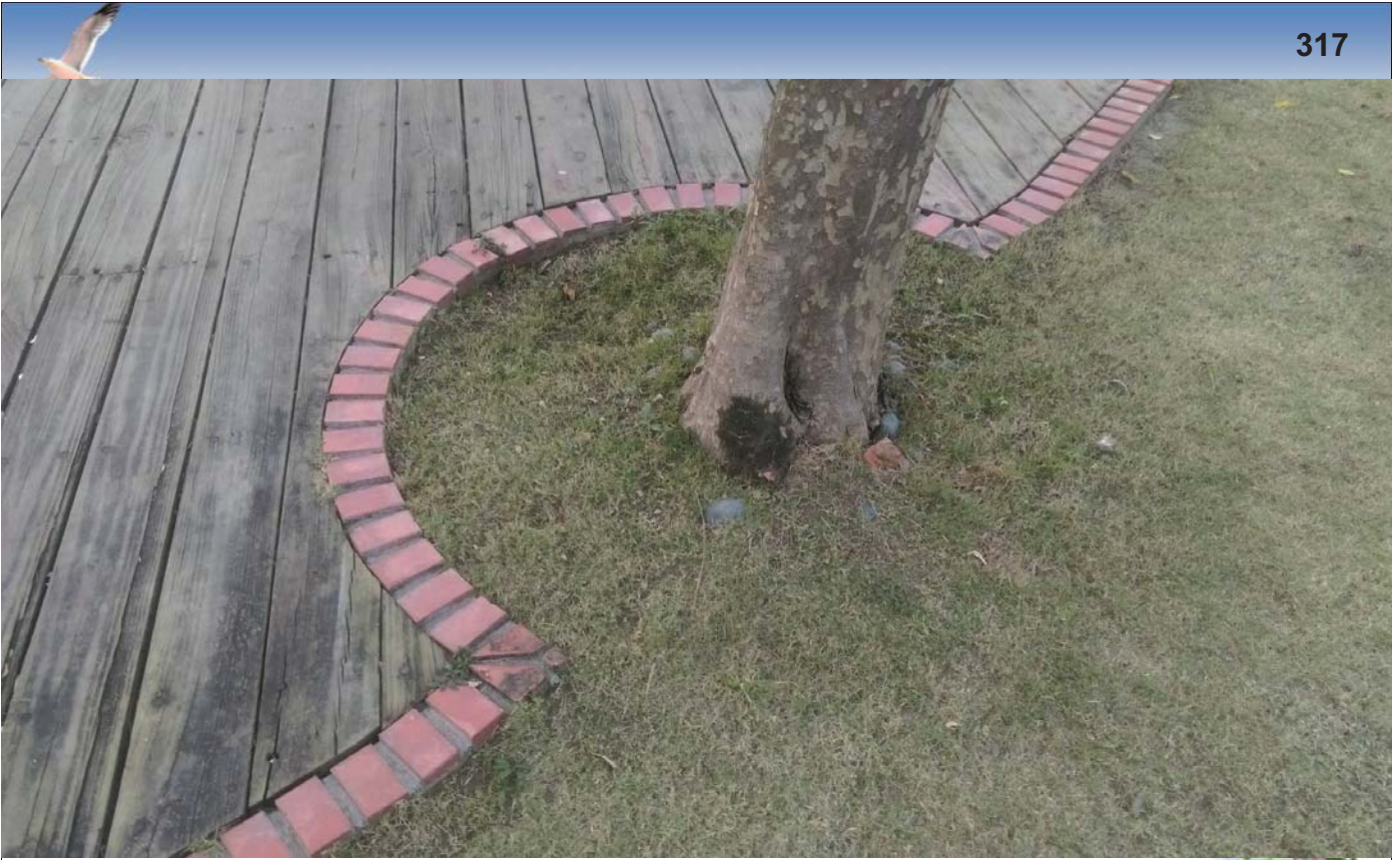










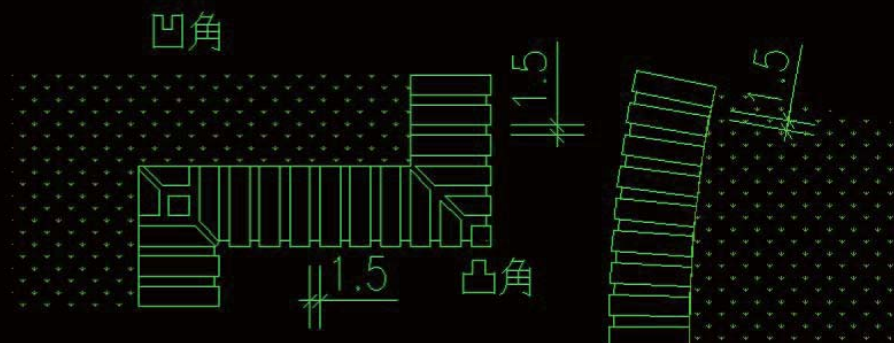




清水磚砌要領

320

普通紅磚,汰除缺角龜裂劣料,充份浸水後俟表面稍乾
 以 1:3 水泥砂漿 逐塊滿縫精砌 再以 1:1 水泥砂漿勾縫修飾
 磚縫要求平整 磚縫深 1cm 寬 1~1.5cm
 轉角處中線對切磚接續
 清水磚砌應於現場試砌經監造單位審核後據以施作
 每 3M 一道保利龍隔離縫



砌磚緣石詳圖





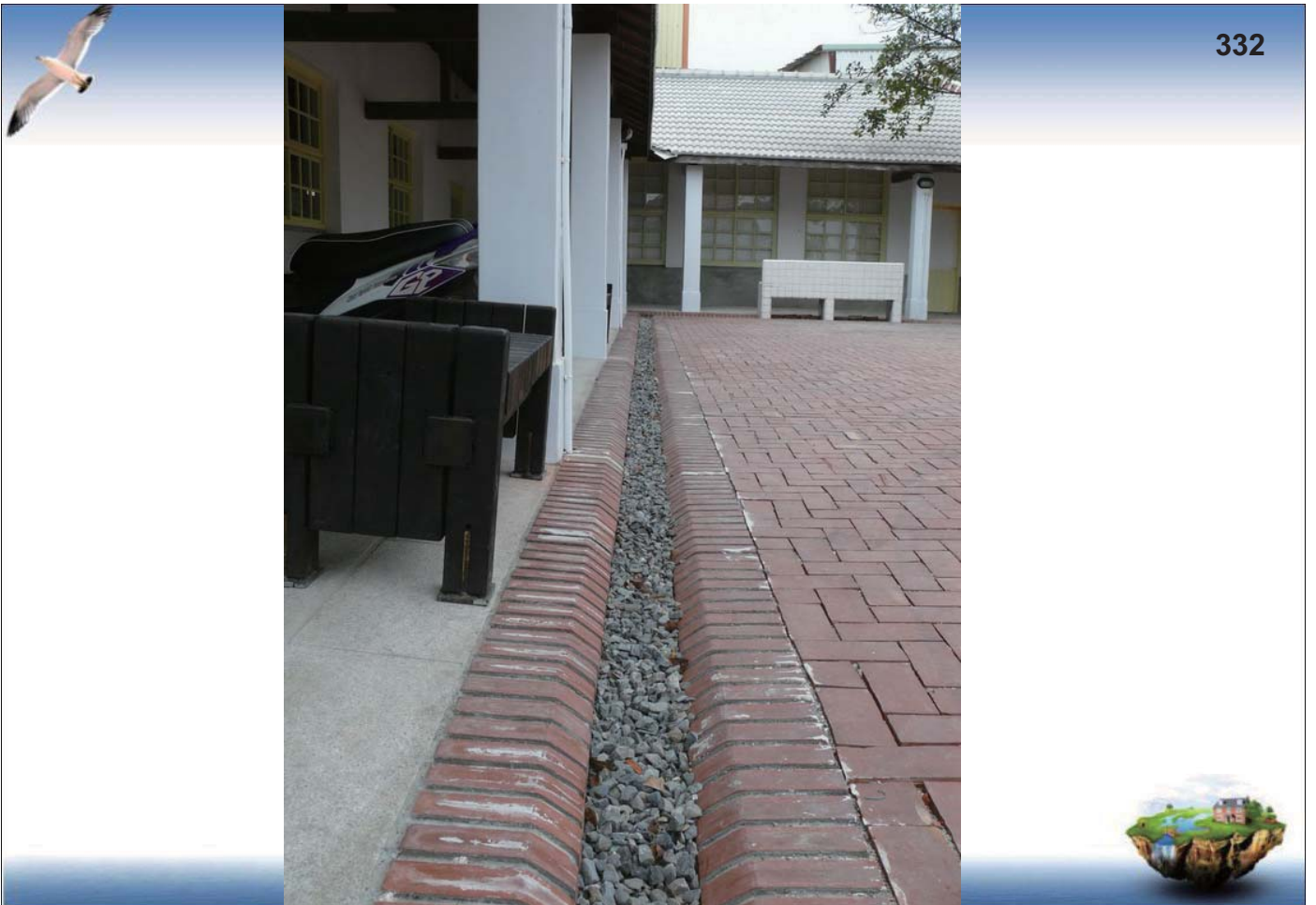


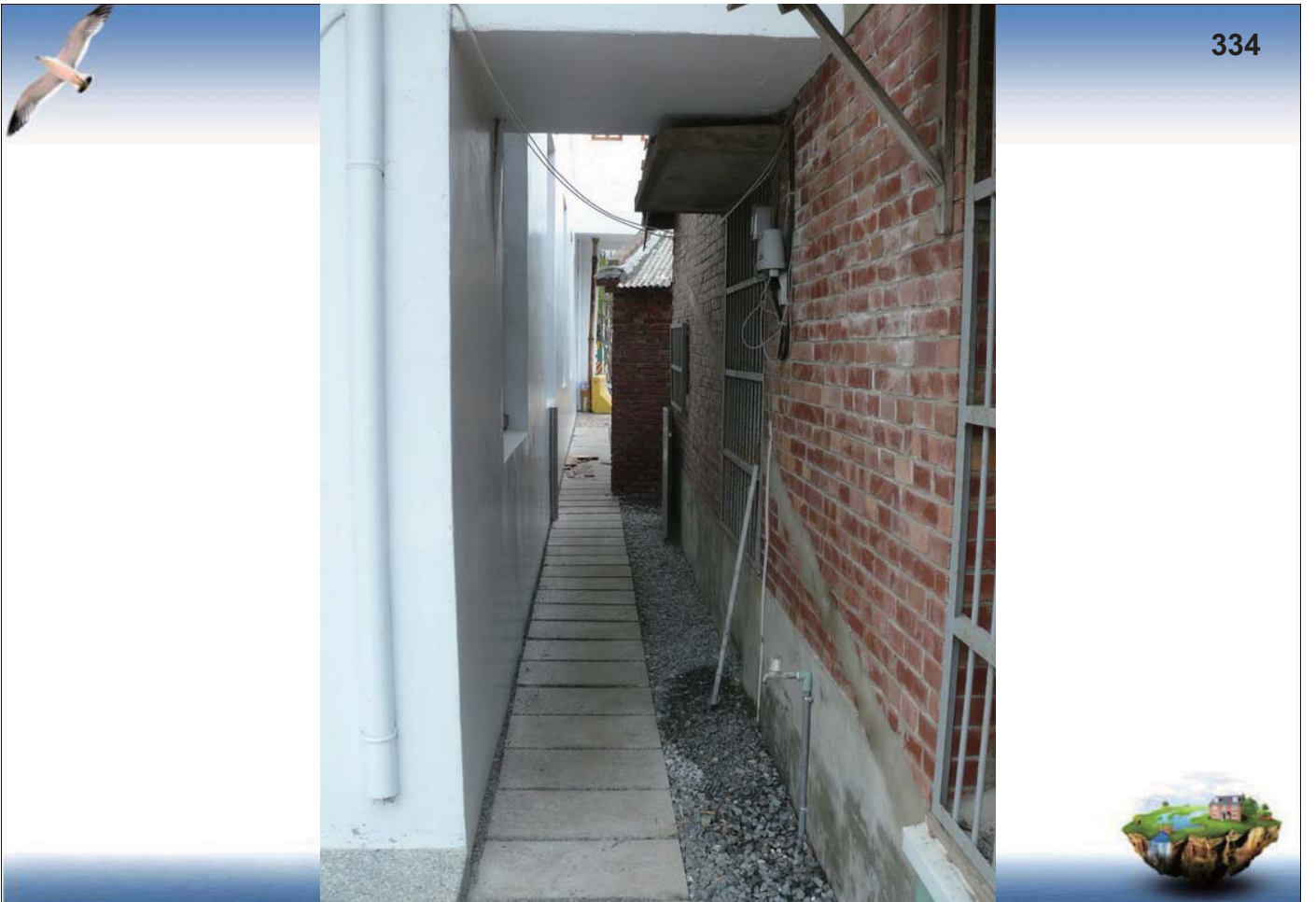


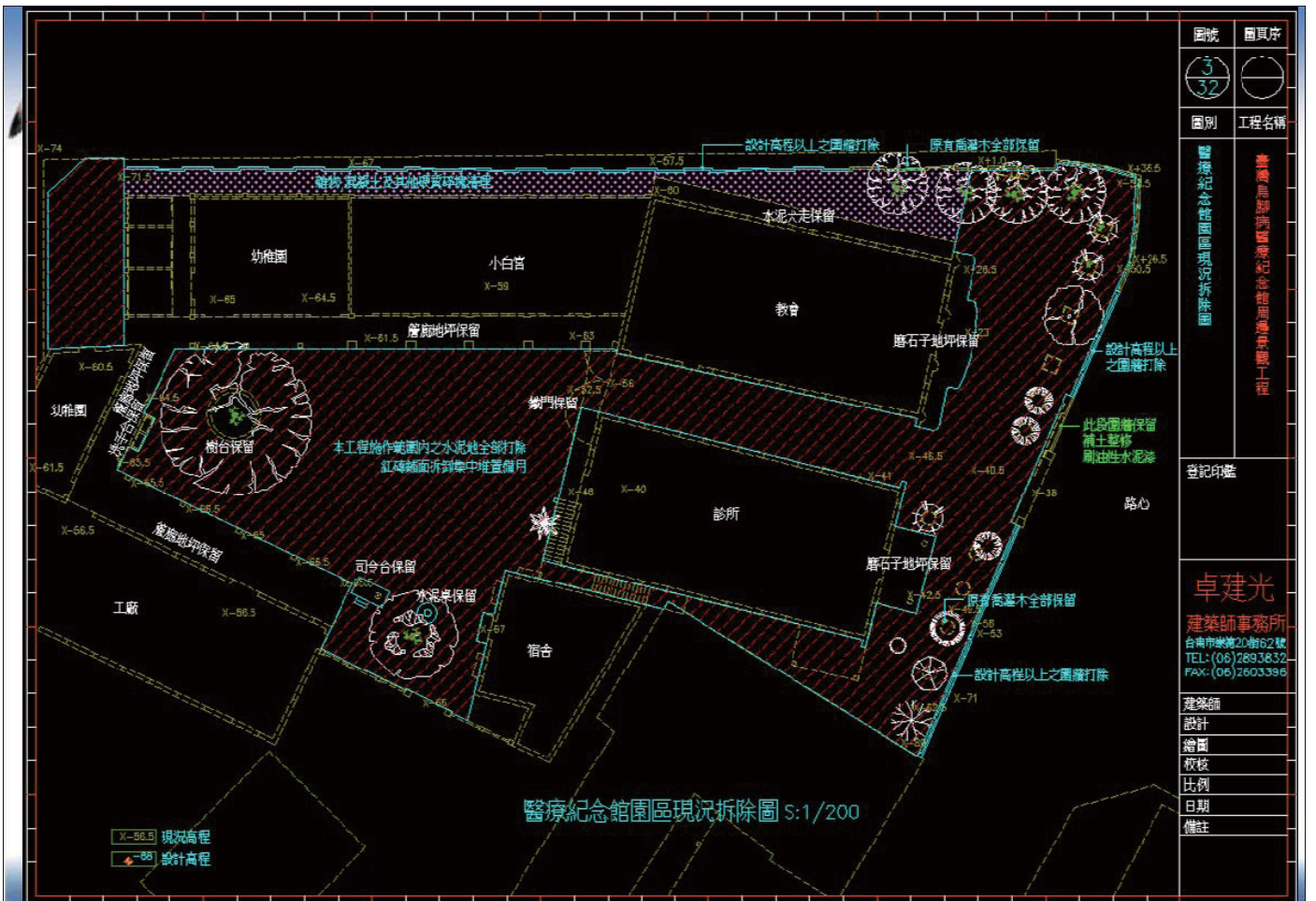
整修比新建 難搞

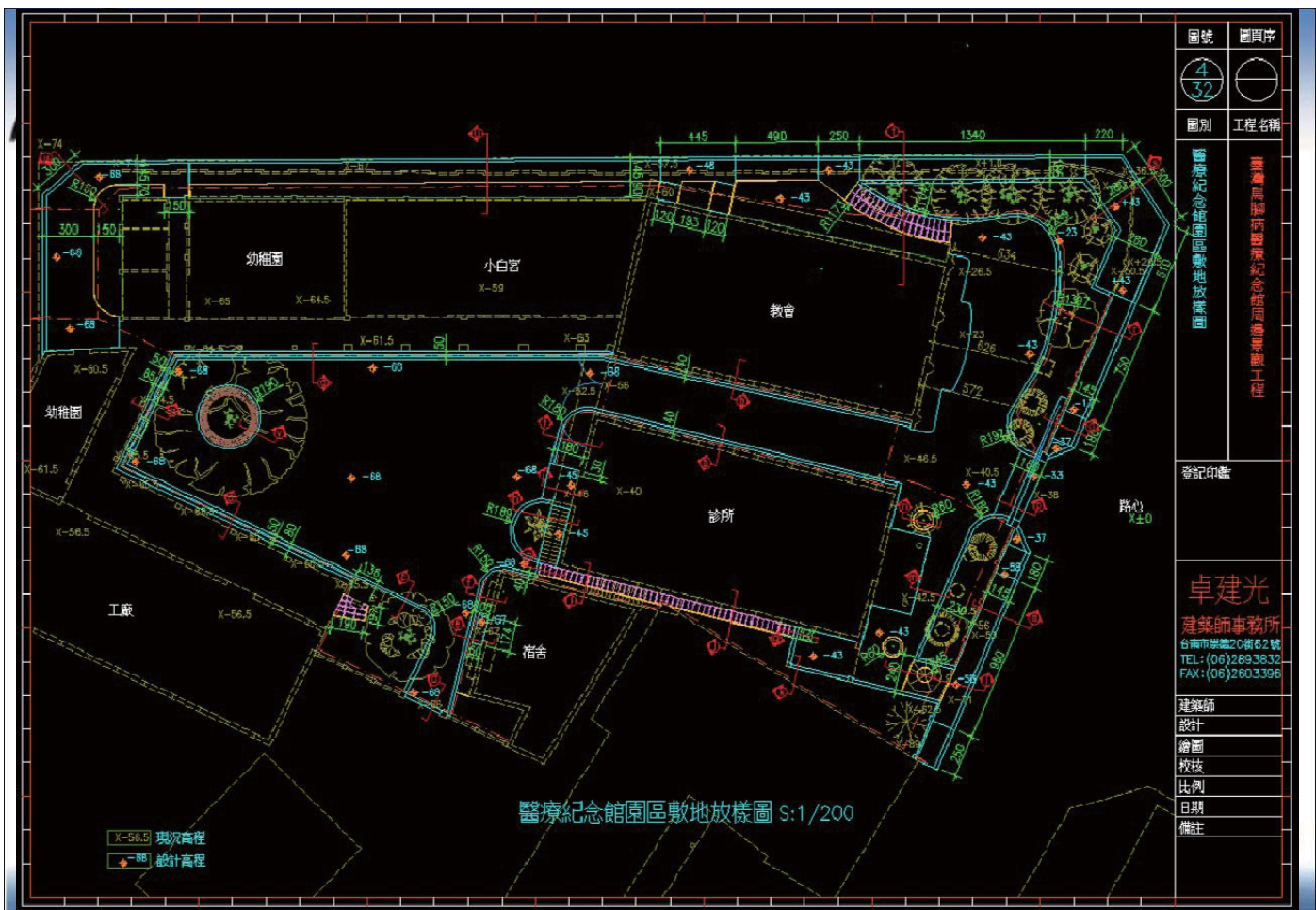


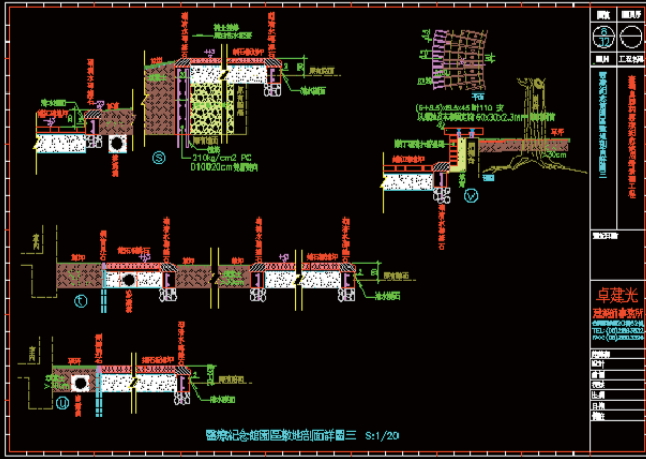




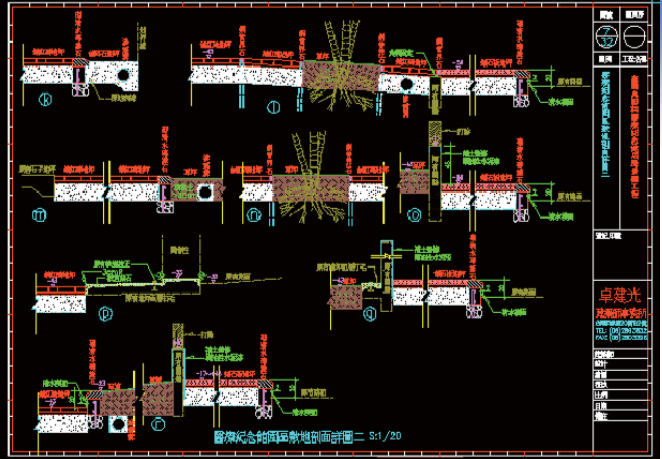




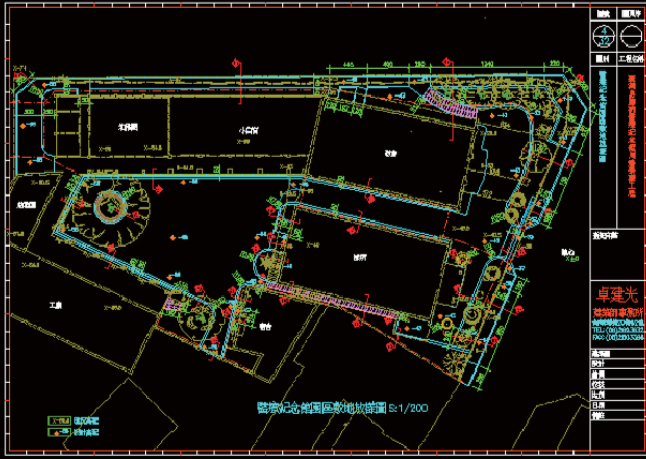




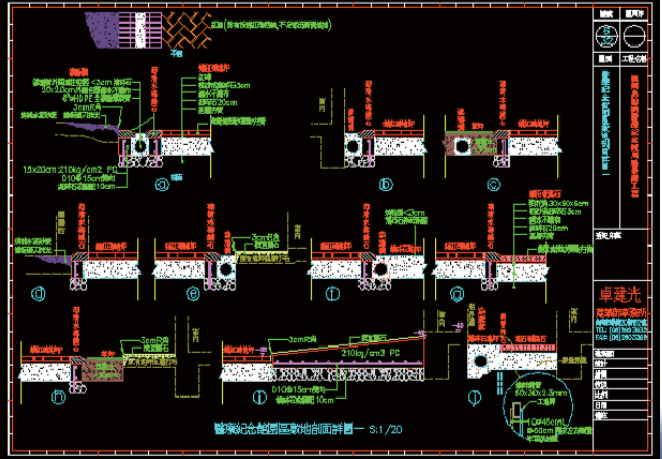
醫療紀念館園區敷地剖面詳圖三 S:1/20



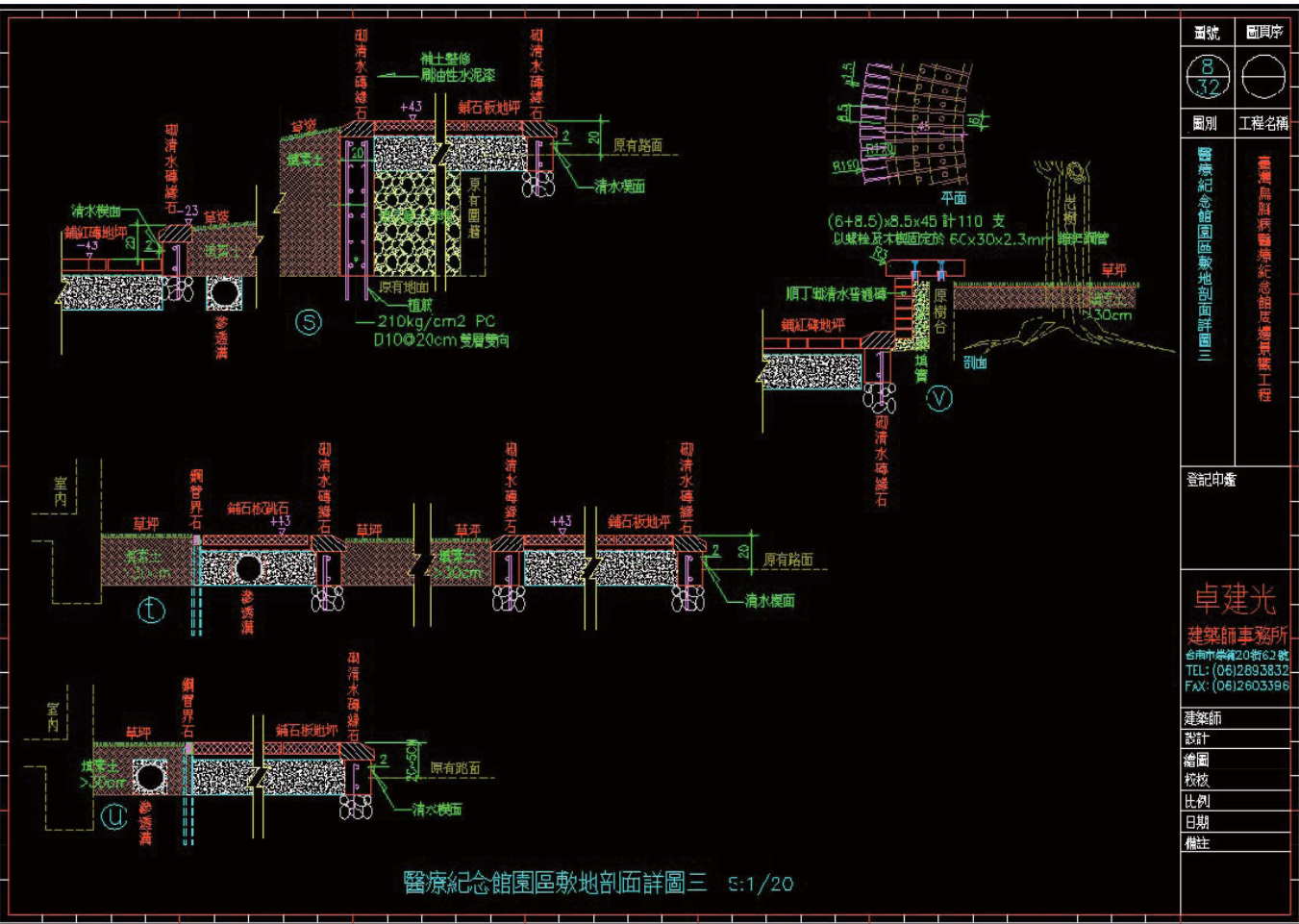
醫療紀念館園區敷地剖面詳圖二 S:1/20



醫療紀念館園區敷地剖面詳圖一 S:1/200



醫療紀念館園區敷地剖面詳圖一 S:1/20



醫療紀念館園區敷地剖面詳圖三 S:1/20

圖號	圖頁序
B 72	
圖別	工程名稱
	臺灣烏腳病醫療紀念館庭園綠化工程
登記印處	
卓建光	
建築師事務所	
台南市學街20街62號	
TEL: (06)2893532	
FAX: (06)2893396	
建築師	
設計	
繪圖	
校核	
比例	
日期	
備註	



阻擋烈陽







中空PP版 保護墊



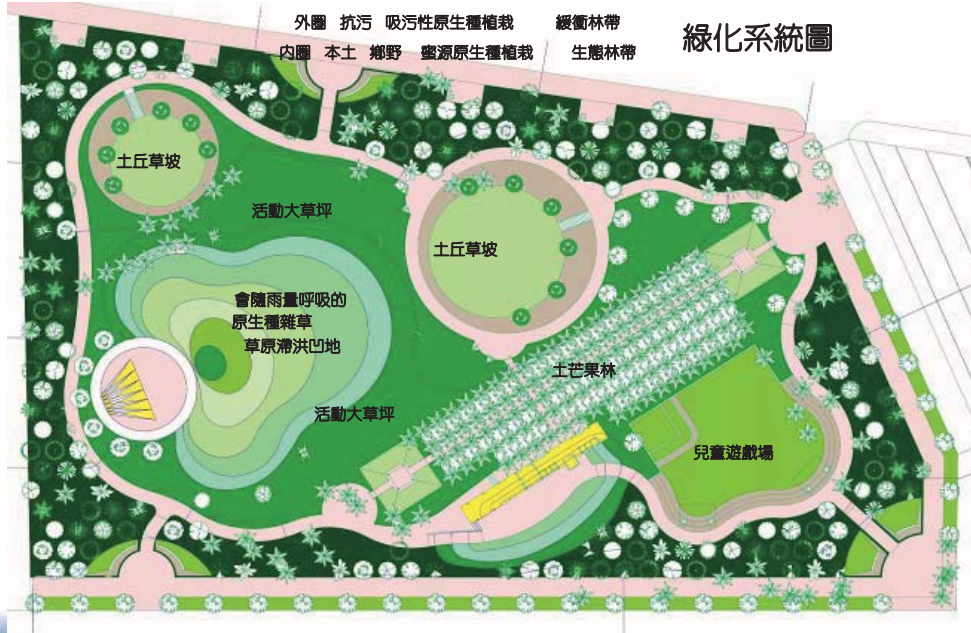
346

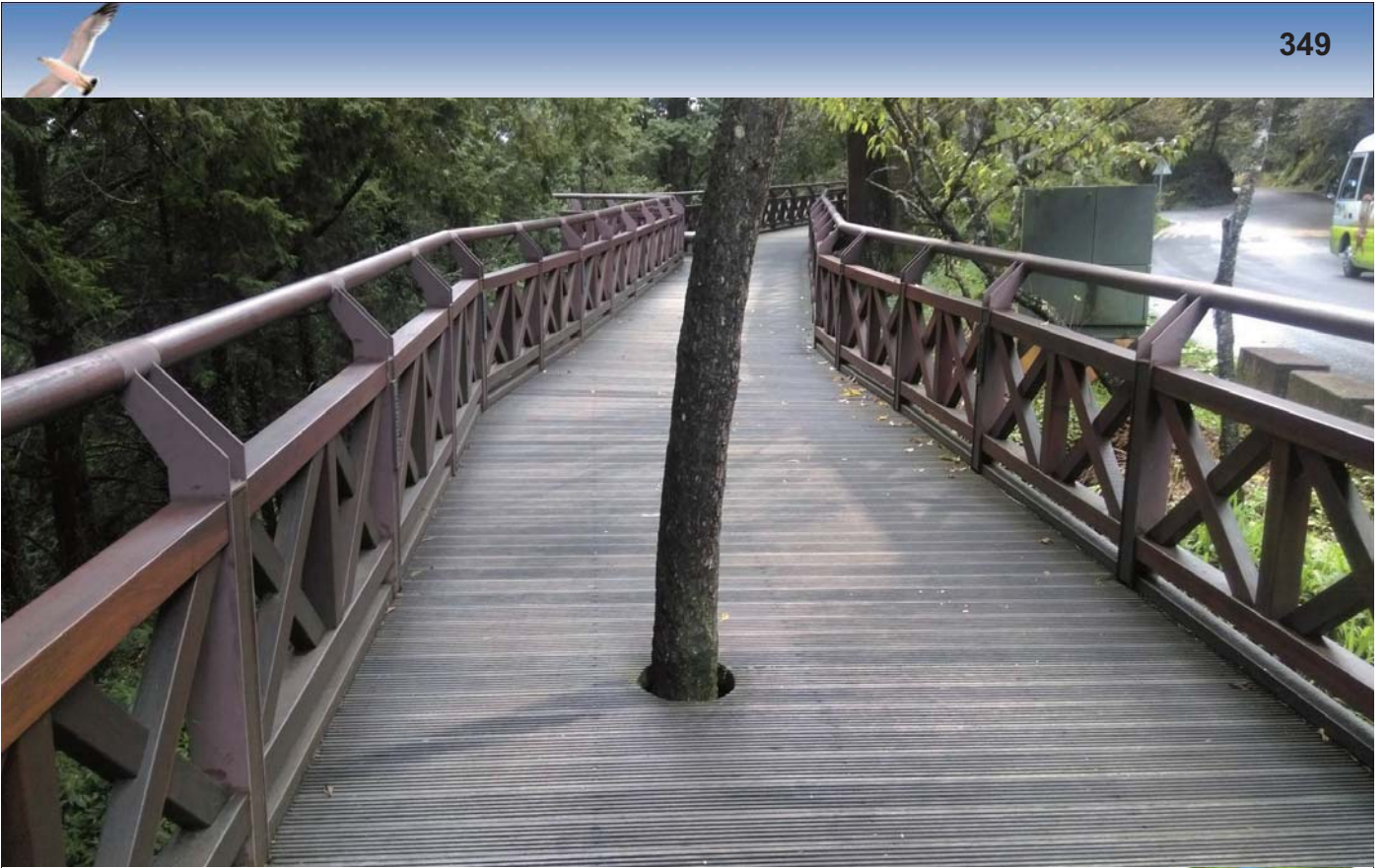
有關植栽



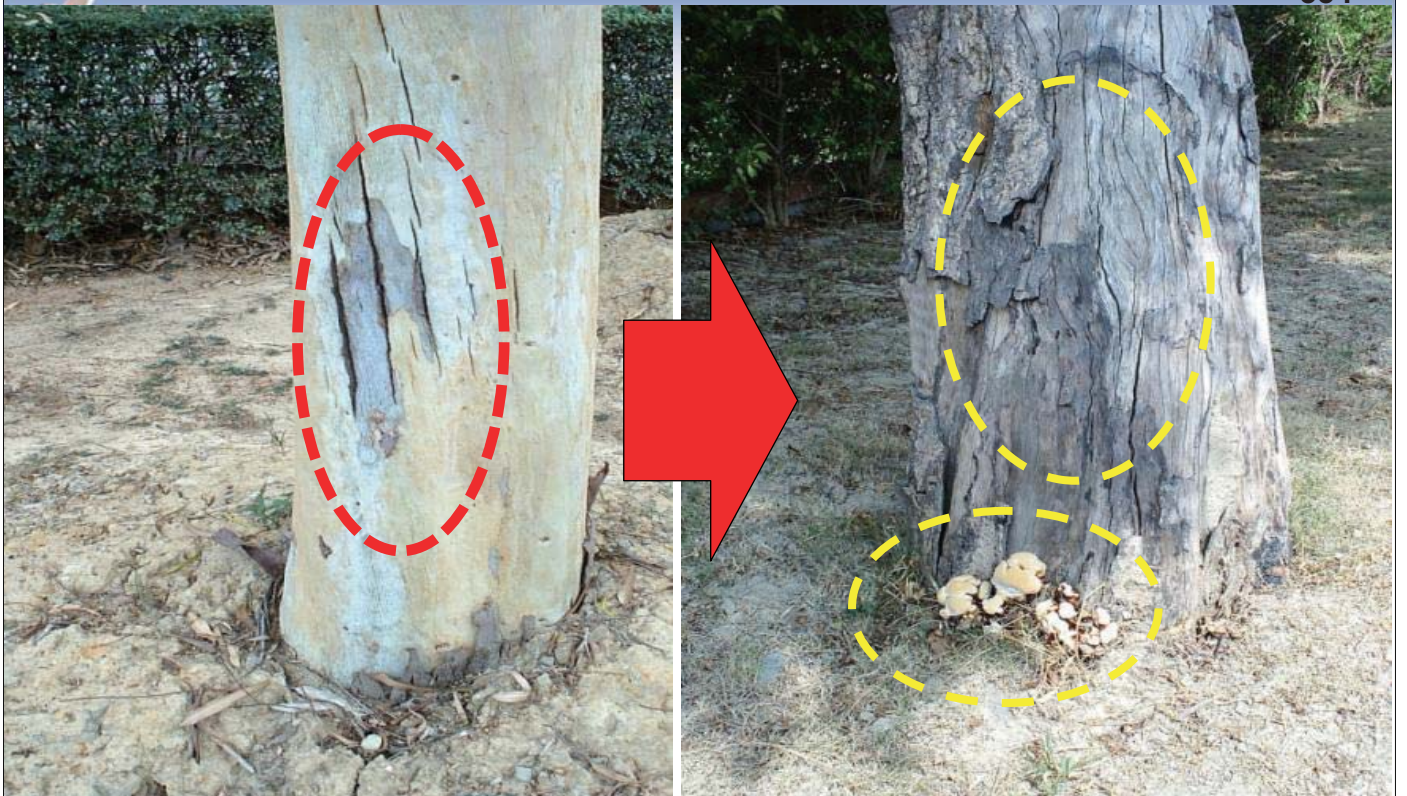
原生在地多層次的綠化植生

設置『帶狀密林區』減少『草坪』增加『草原』
 原生種植物綠化計畫 從小樹種起
 廣植誘蝶誘鳥誘蟲植物
 多層次混種雜生園藝









「種植太深」或「覆土太深」 樹頭因呼吸困難
根系生長不良、引發「皮孔放大」現象而腐朽



水體



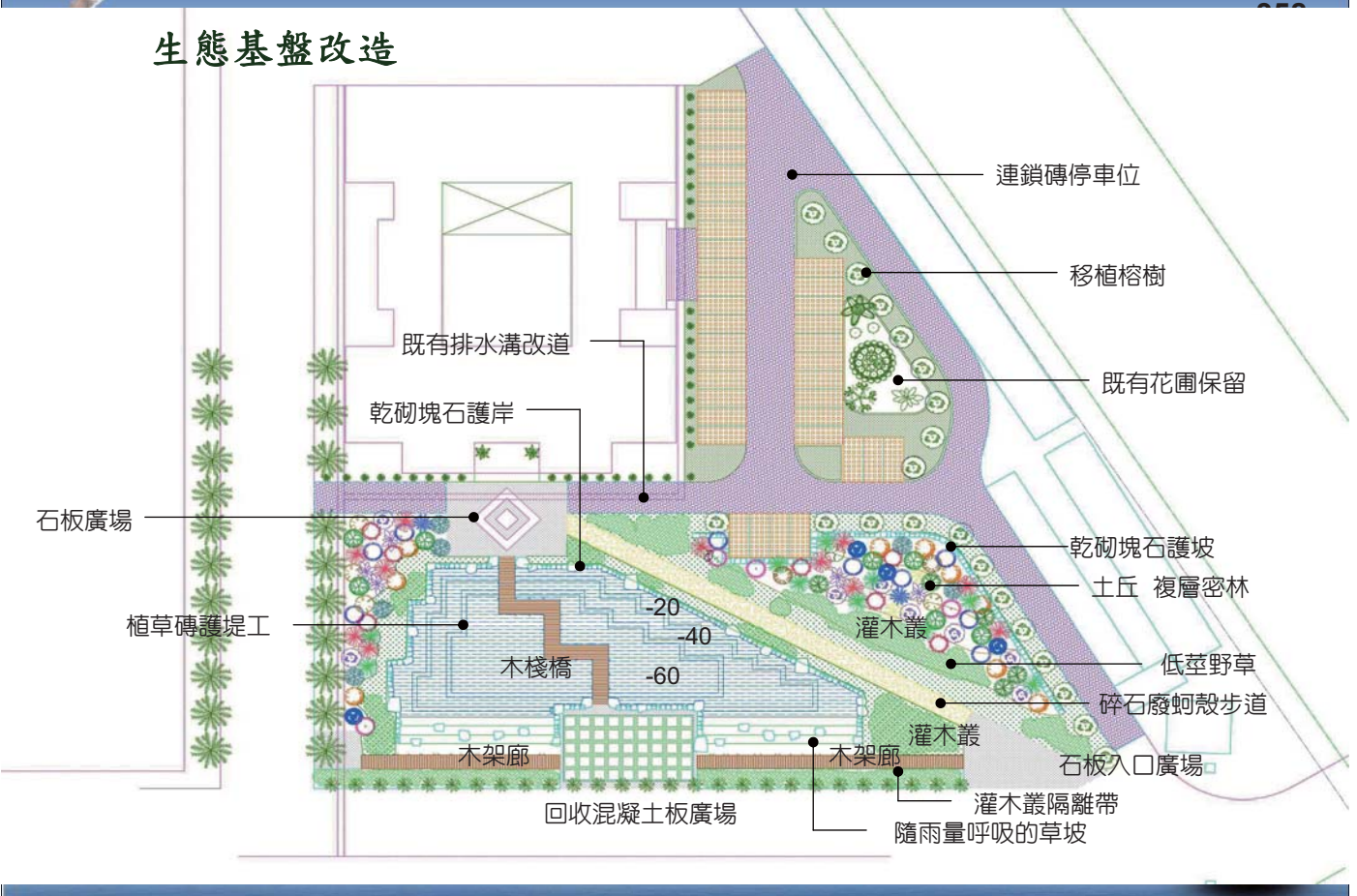
生態基盤改造



生態基盤改造



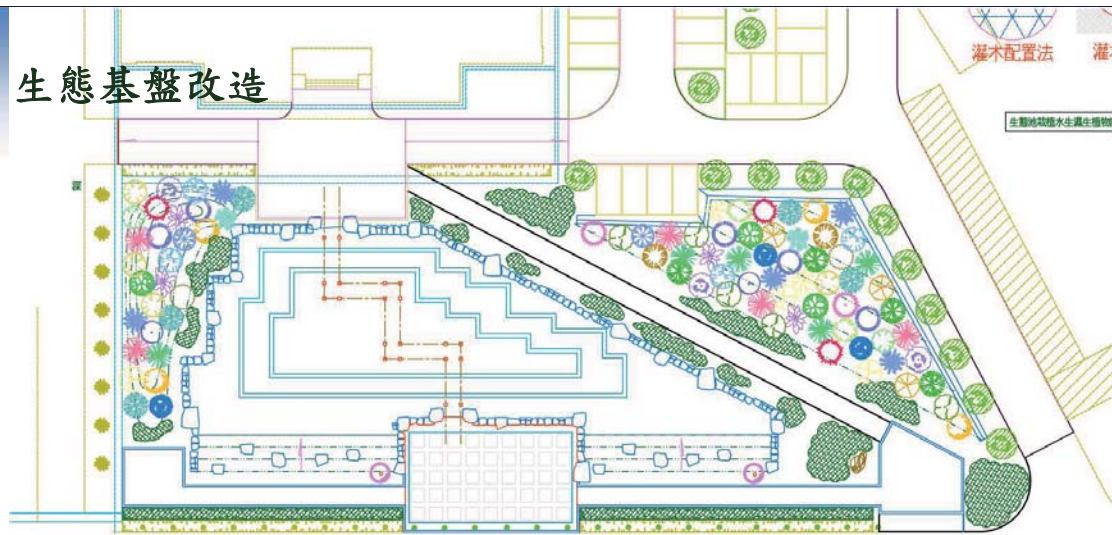
生態基盤改造



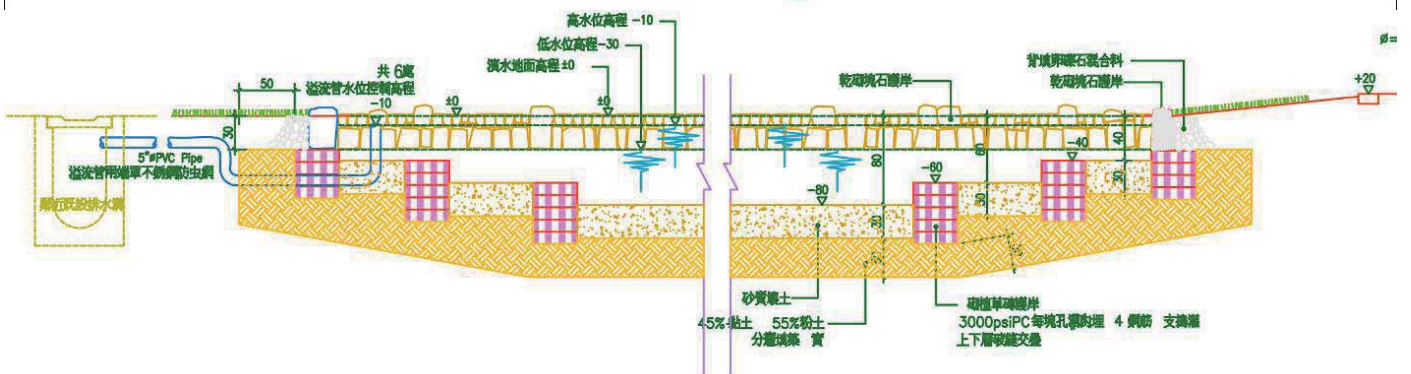
生態基盤改造



生態基盤改造



宏遠環保公園植栽設置圖 S:1/200







環保-生活廢水淨化再利用

❖ 利用廚房與宿舍生活廢水，建置宏遠生態水系，復育地球之腎的「溼地」，兼具淨水/景觀/生態/教育功能；善盡企業社會責任之本份。



*維護單位：尖端研究所

B池：植物種源池













觀念對就對了

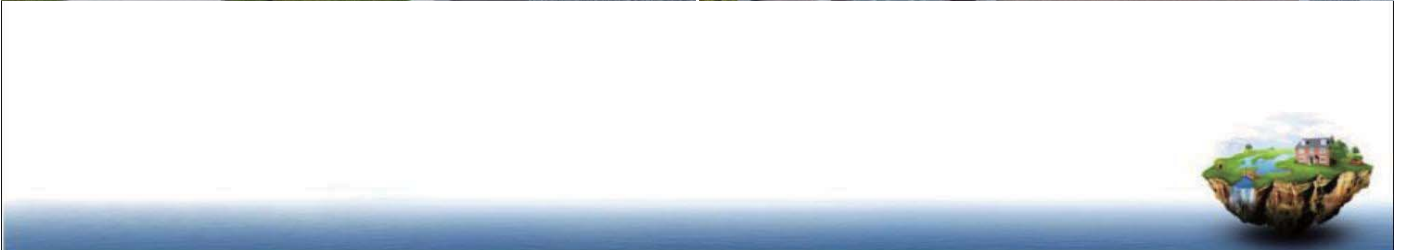




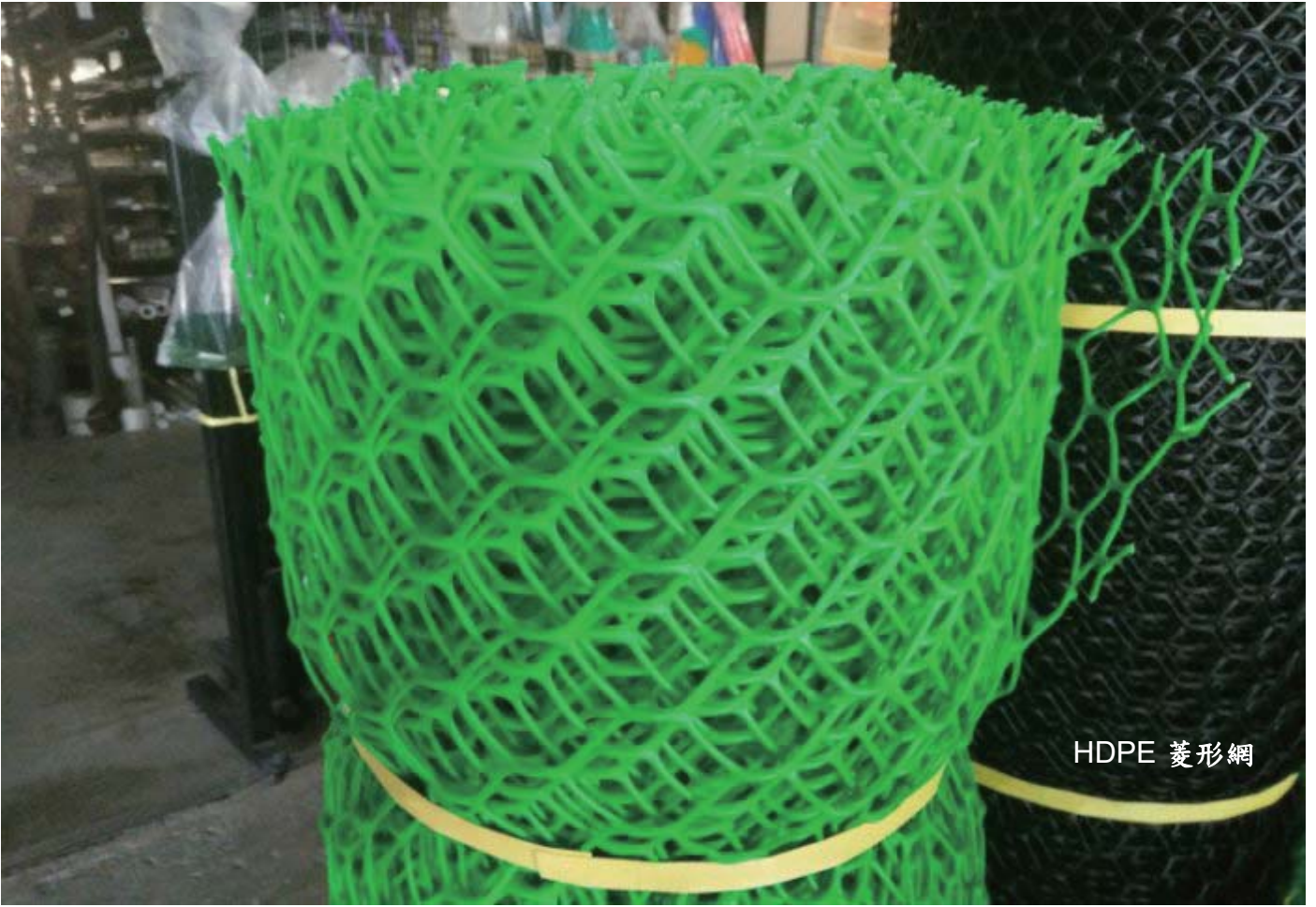
少就是多







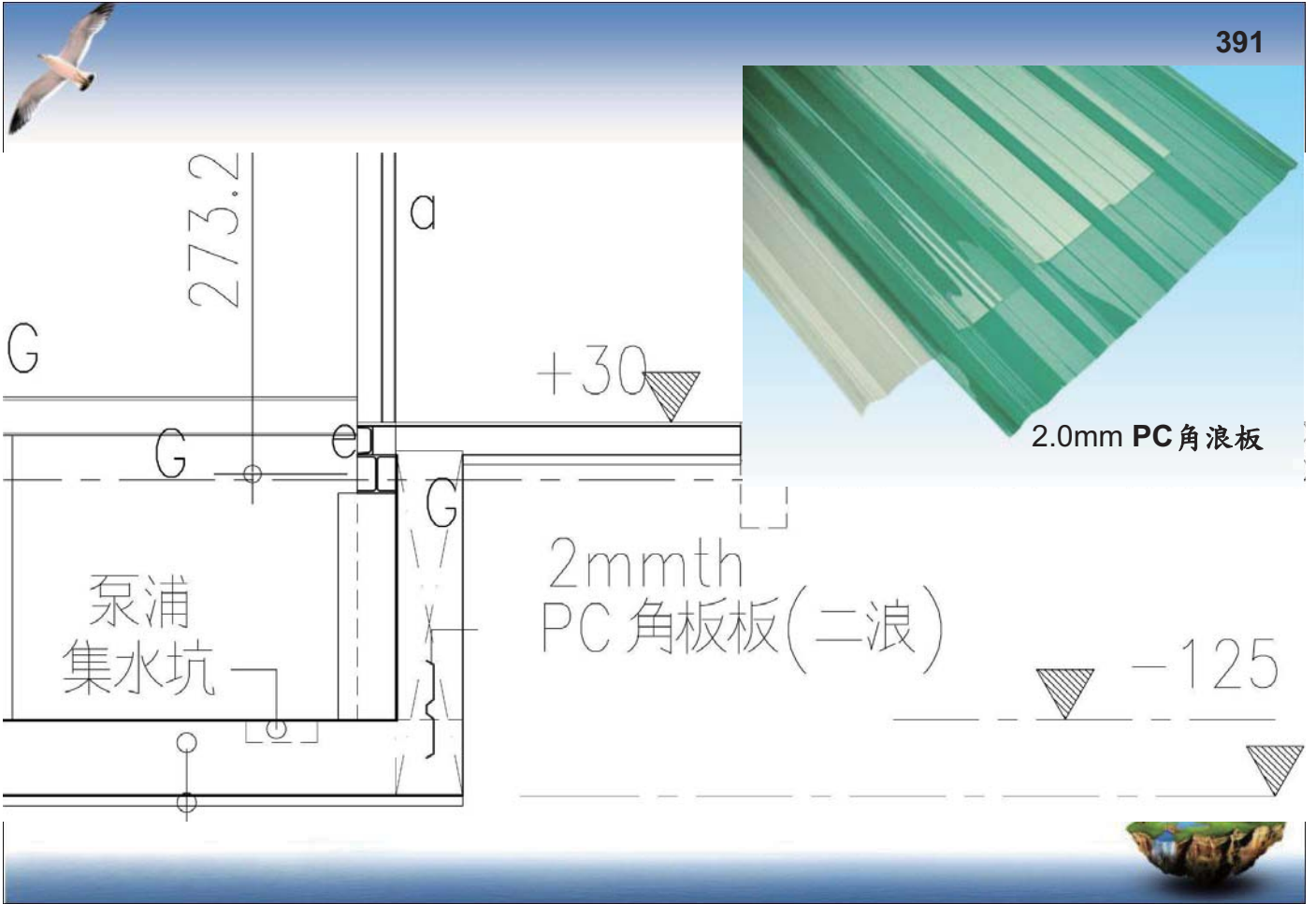




HDPE 菱形網









資源再利用

DIY與創意







感謝聆聽
敬請指正

